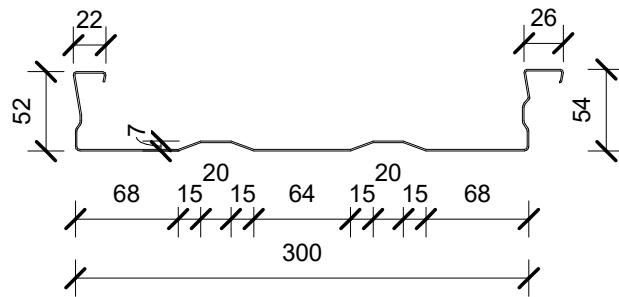


BASE METAL THICKNESS:

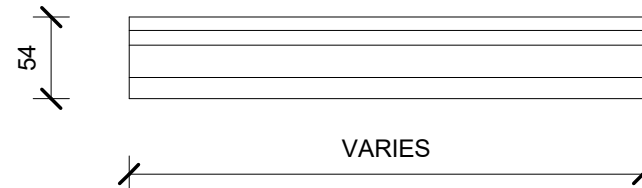
- 0.75mm (G550 STEEL GRADE)
- 0.95mm (G550 STEEL GRADE)
- 1.15mm (G550 STEEL GRADE)

COATING:

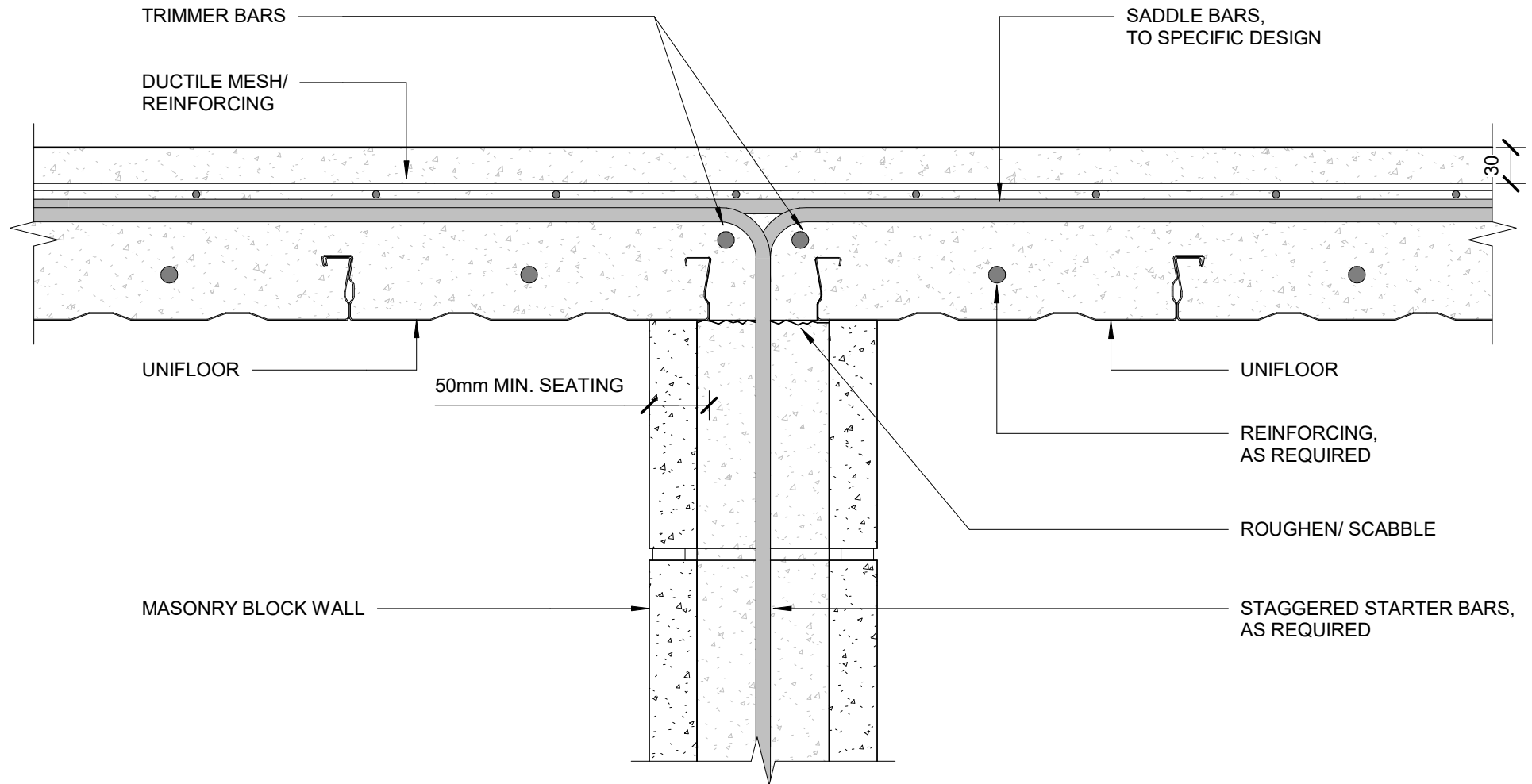
- Z275 GALVANIZED COATING



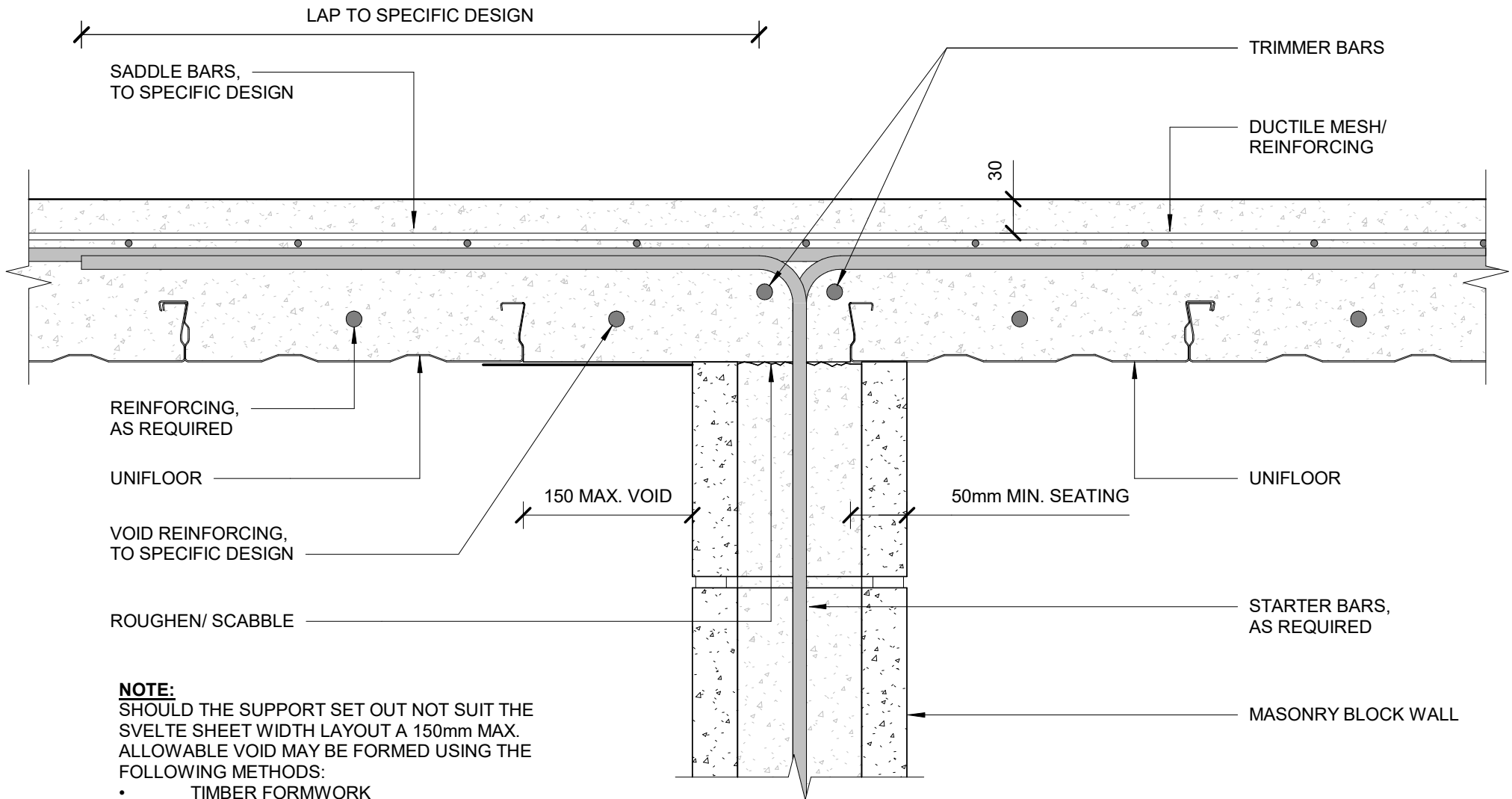
UNIFLOOR PROFILE



UNIFLOOR - ELEVATION



BLOCK INTERNAL SUPPORT PARALLEL TO TRAY SPAN

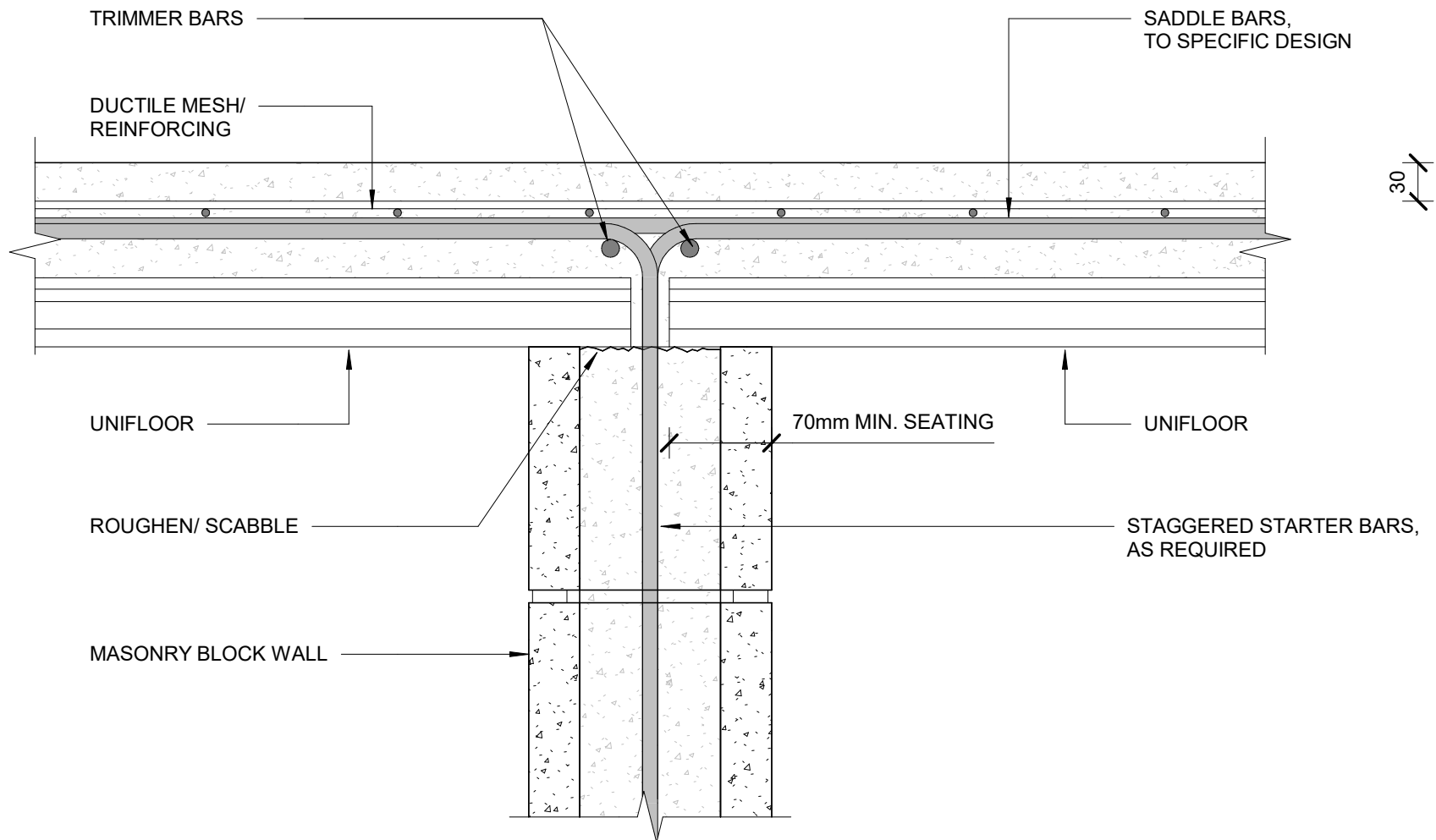


NOTE:

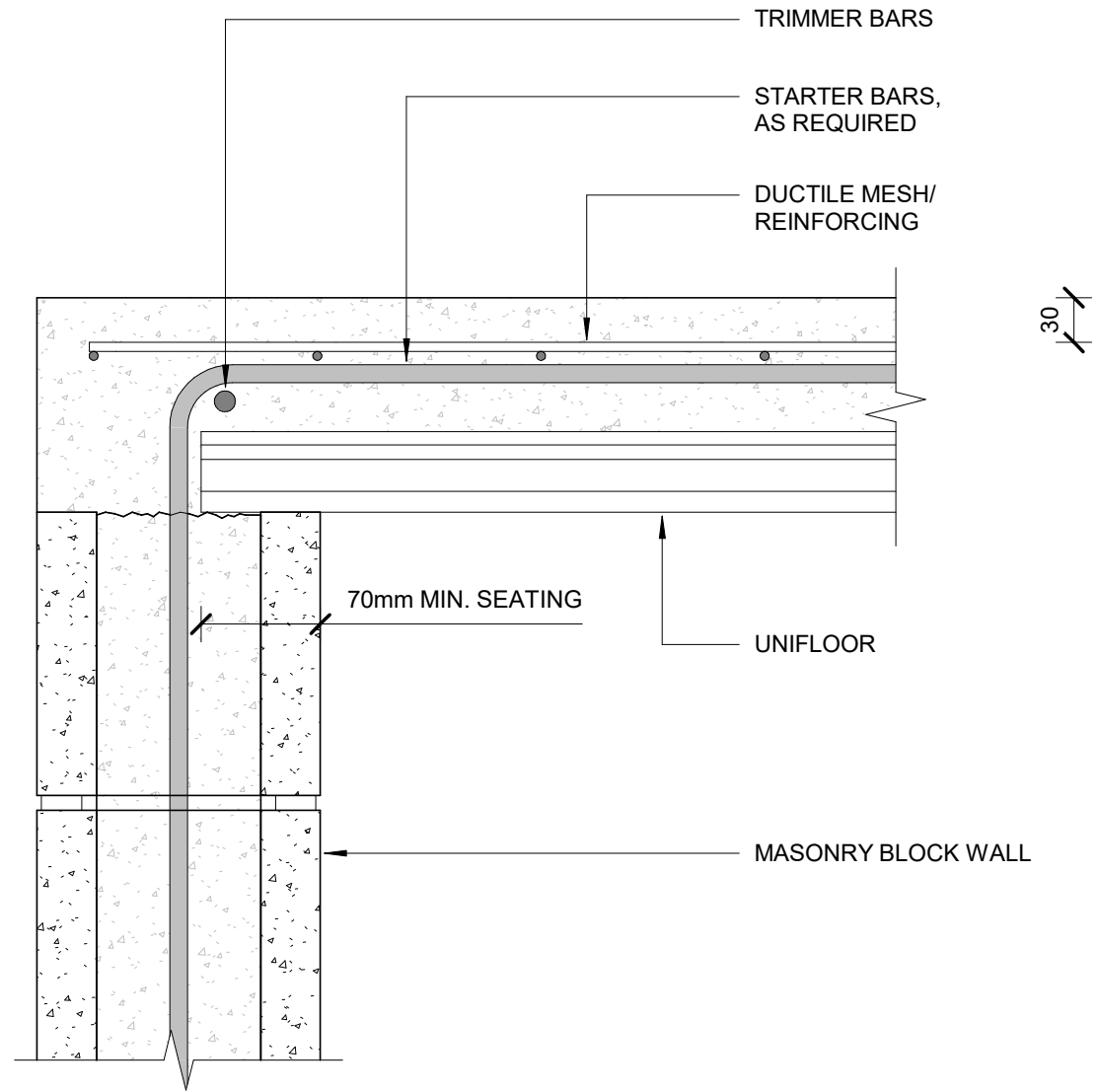
SHOULD THE SUPPORT SET OUT NOT SUIT THE SVELTE SHEET WIDTH LAYOUT A 150mm MAX. ALLOWABLE VOID MAY BE FORMED USING THE FOLLOWING METHODS:

- TIMBER FORMWORK
- SHEET METAL FLASHING FIXED TO SVELTE SHEET USING TEK SCREWS @ 300 CRS & BLOCK WALL WITH MASONRY NAILS & WASHERS @ 300 CRS.

BLOCK INTERNAL SUPPORT PARALLEL TO TRAY SPAN (OPTION 2)



BLOCK INTERNAL SUPPORT PERPENDICULAR TO TRAY SPAN

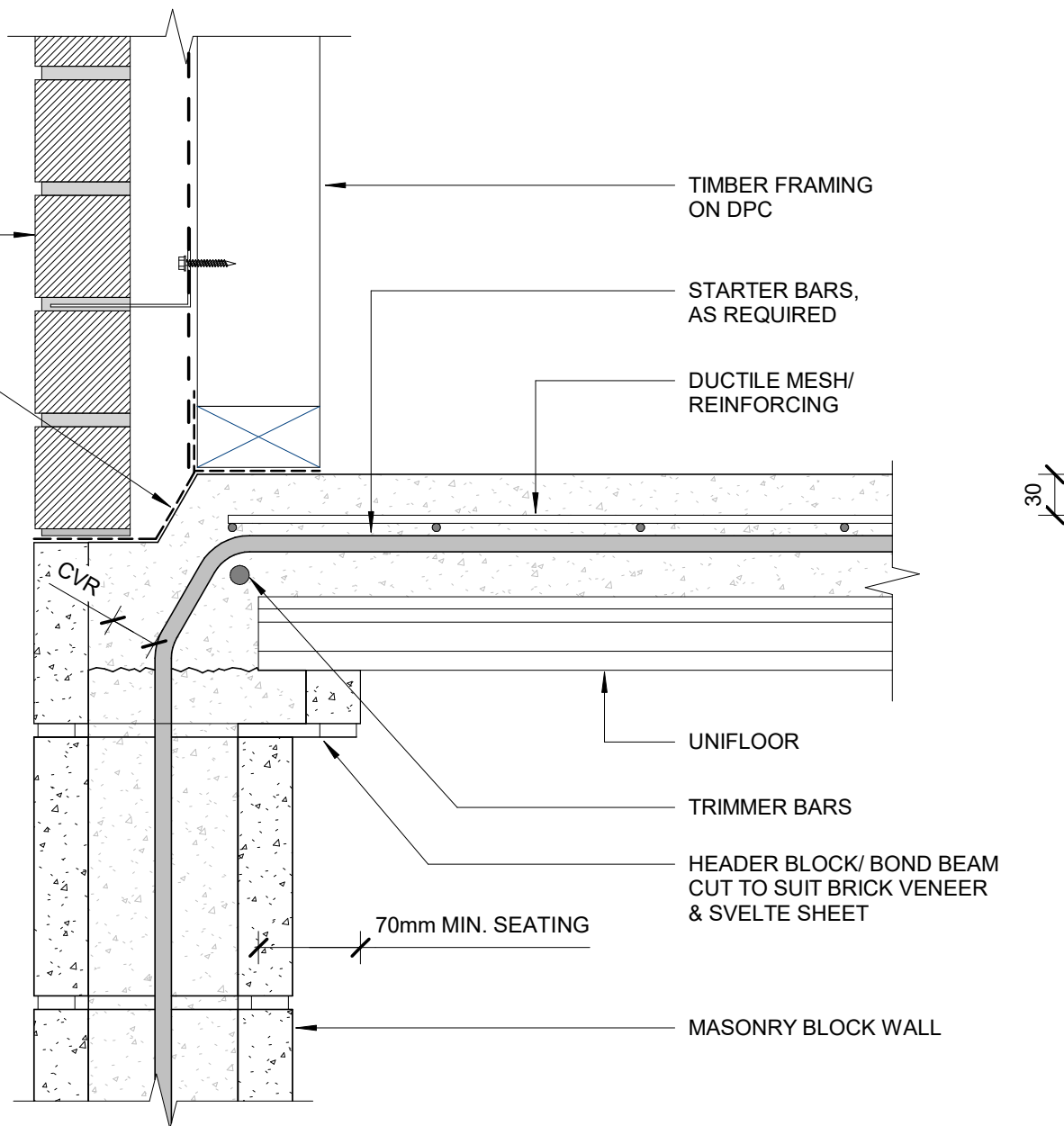


BLOCK SUPPORT PERPENDICULAR TO TRAY SPAN

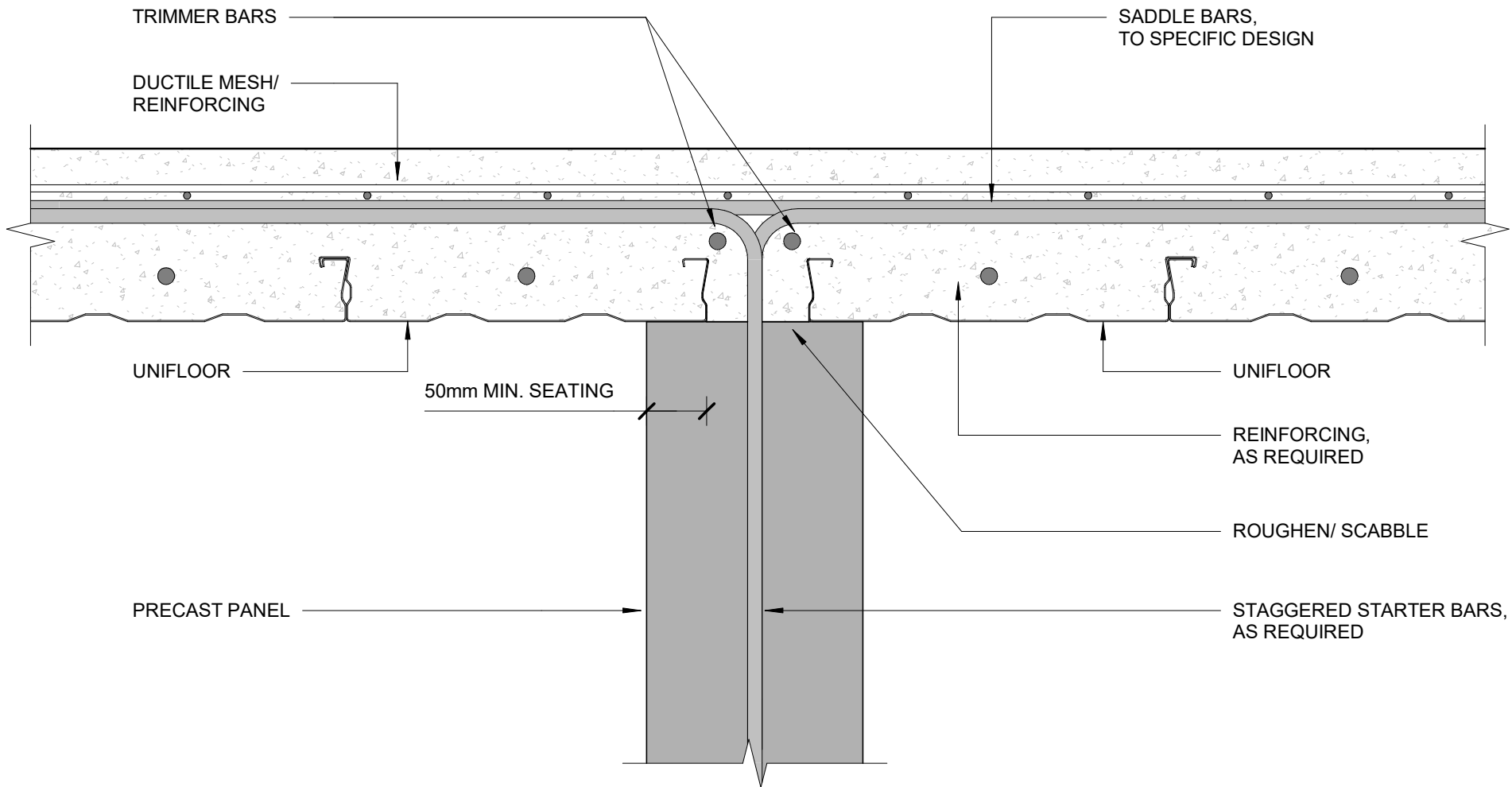
BRICK VENEER CLADDING &
BRICK TIES IN ACCORDANCE
WITH NZS 3604

WATERPROOF MEMBRANE

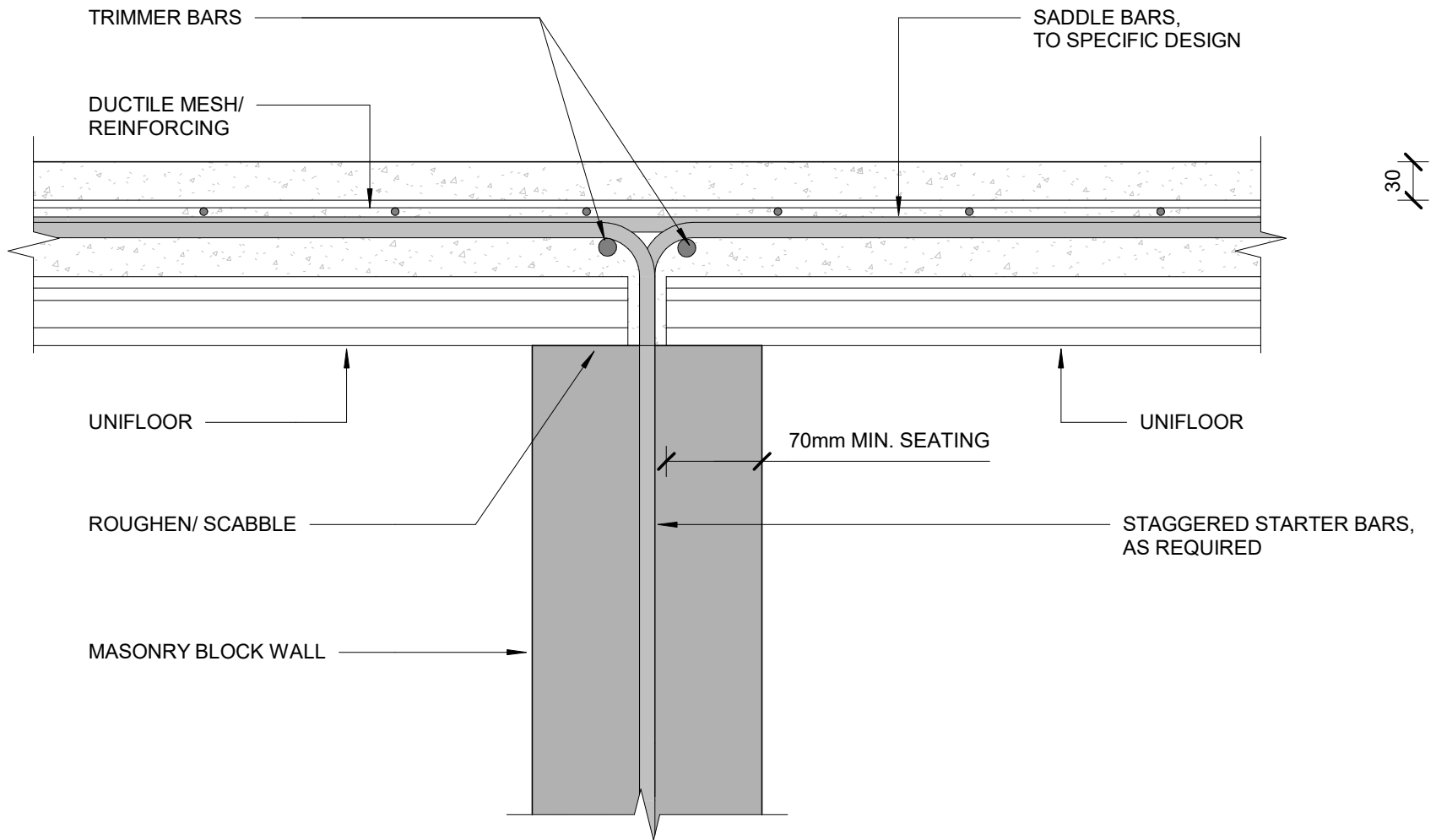
REBATE IN ACCORDANCE WITH NZS 3604



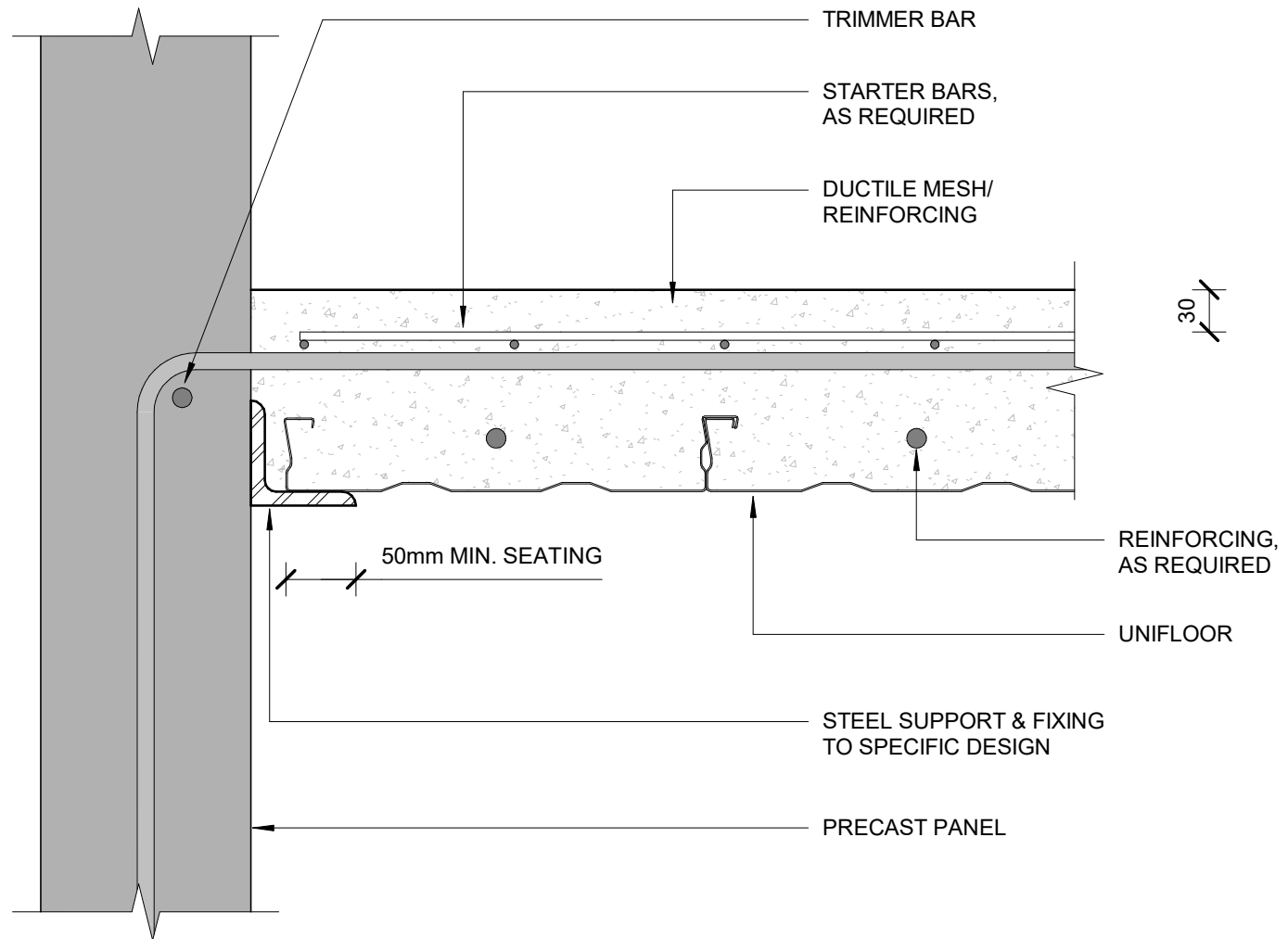
BLOCK SUPPORT PERPENDICULAR TO TRAY SPAN (BRICK VENEER)



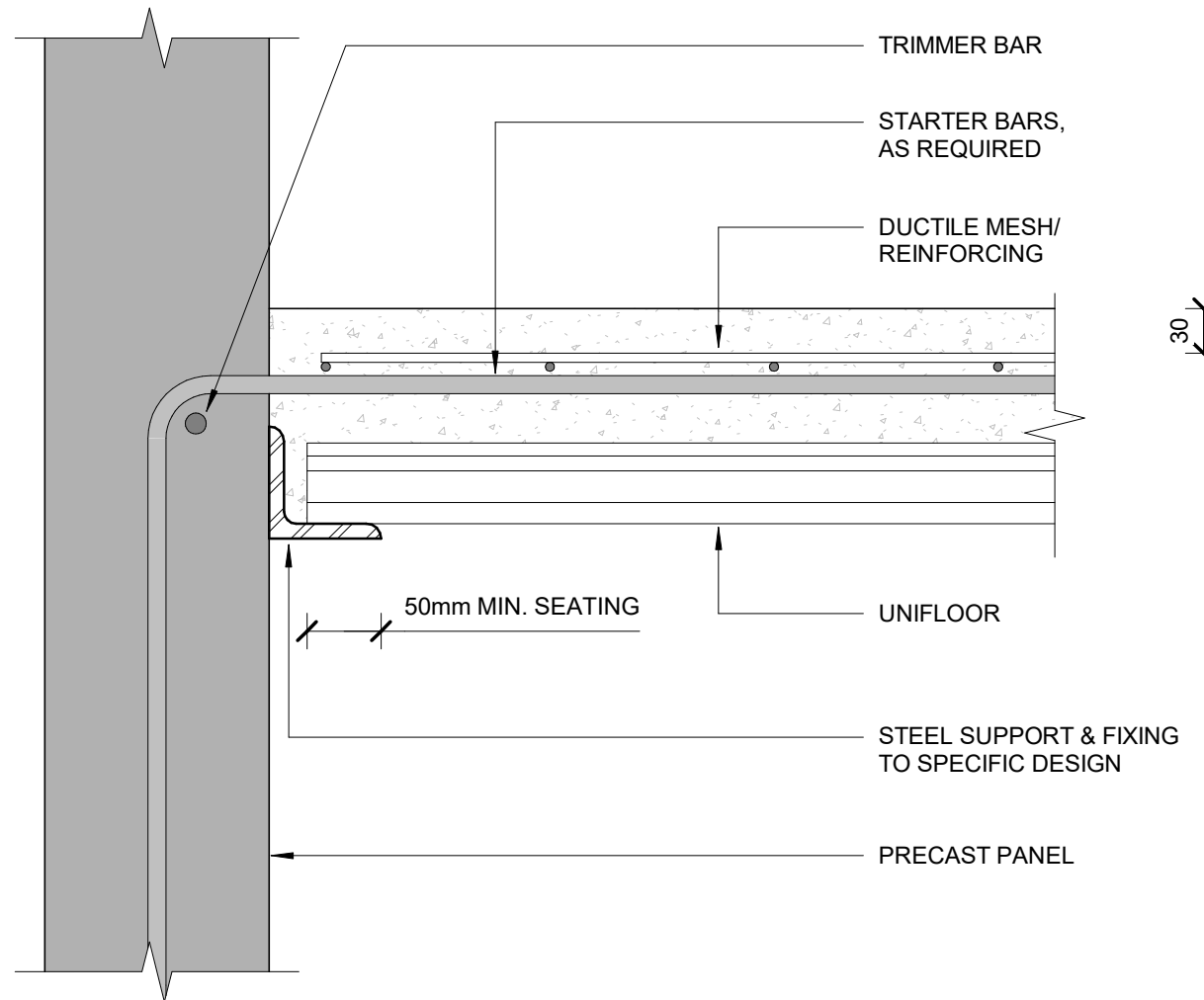
PRECAST PANEL INTERNAL SUPPORT PARALLEL TO TRAY SPAN



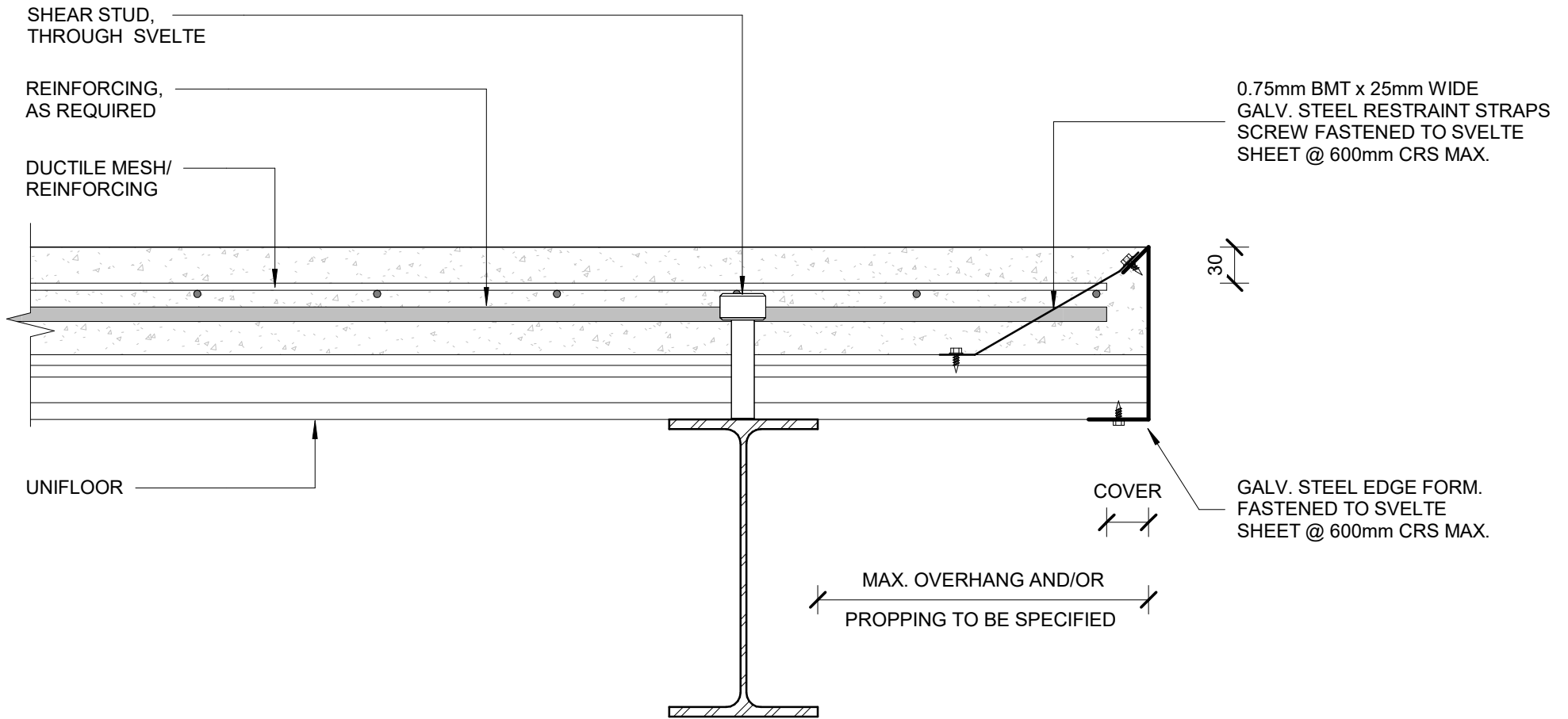
PRECAST PANEL INTERNAL SUPPORT PERPENDICULAR TO TRAY SPAN



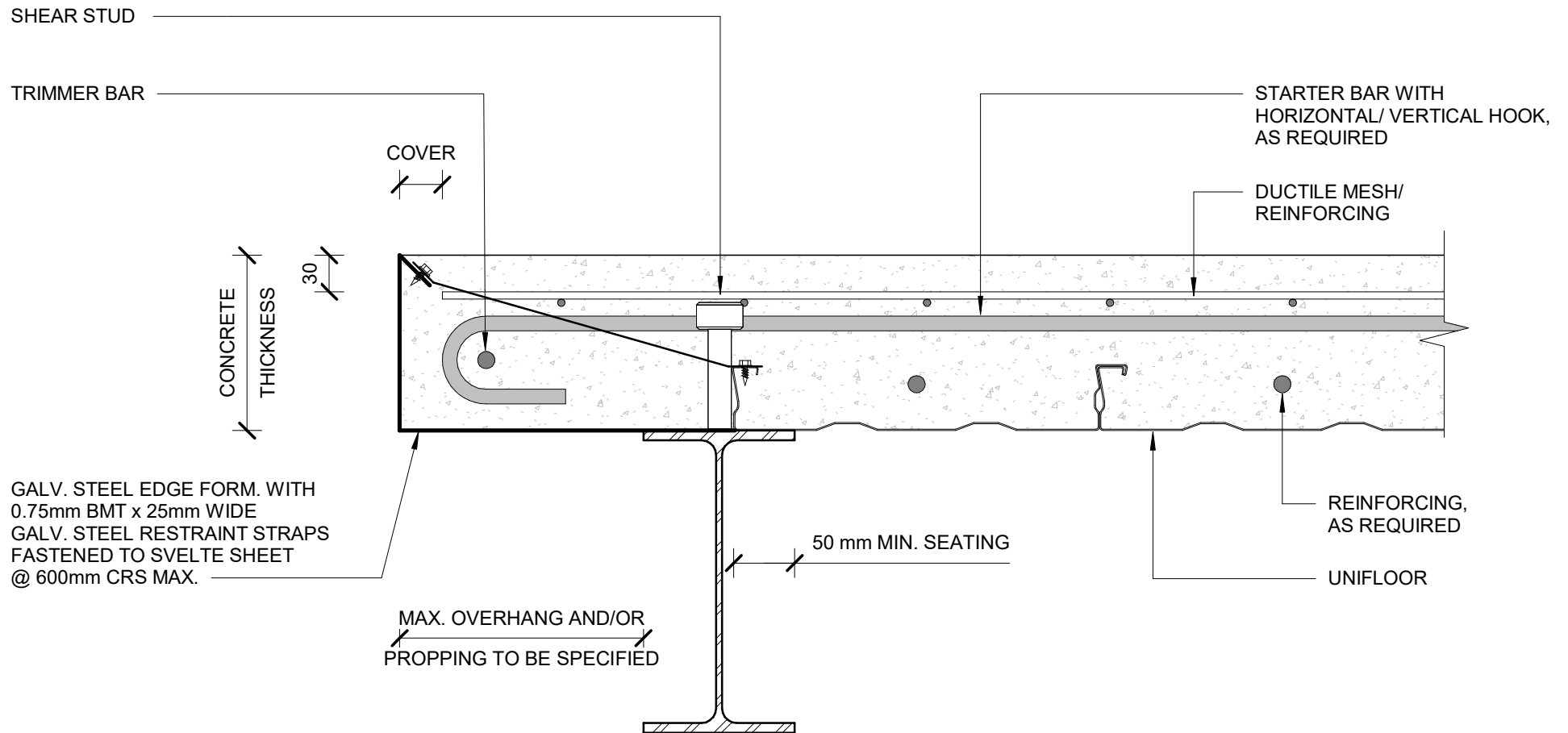
PRECAST PANEL SUPPORT PARALLEL TO TRAY SPAN



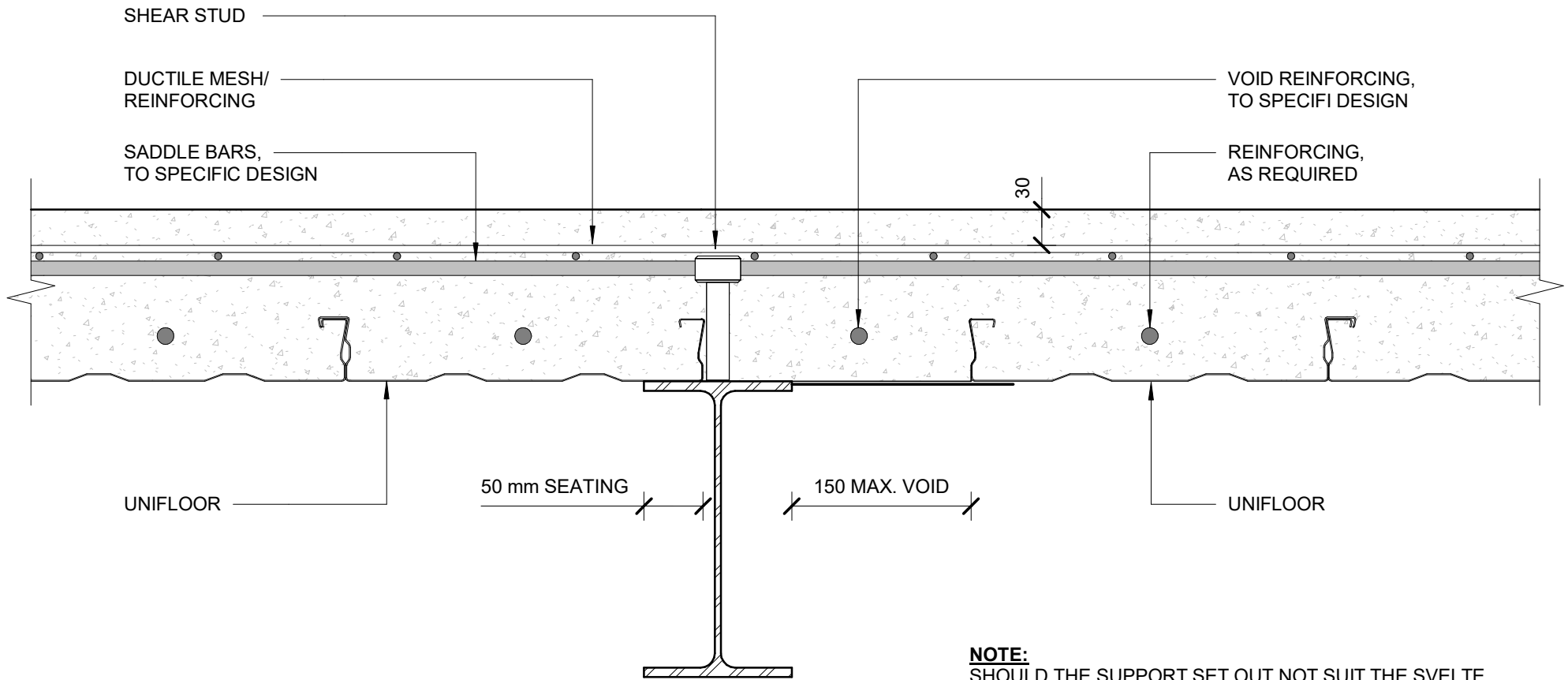
PRECAST PANEL SUPPORT PERPENDICULAR TO TRAY SPAN



CANTILEVER OVER STEEL BEAM



EDGE STEEL BEAM SUPPORT PARALLEL TO TRAY SPAN

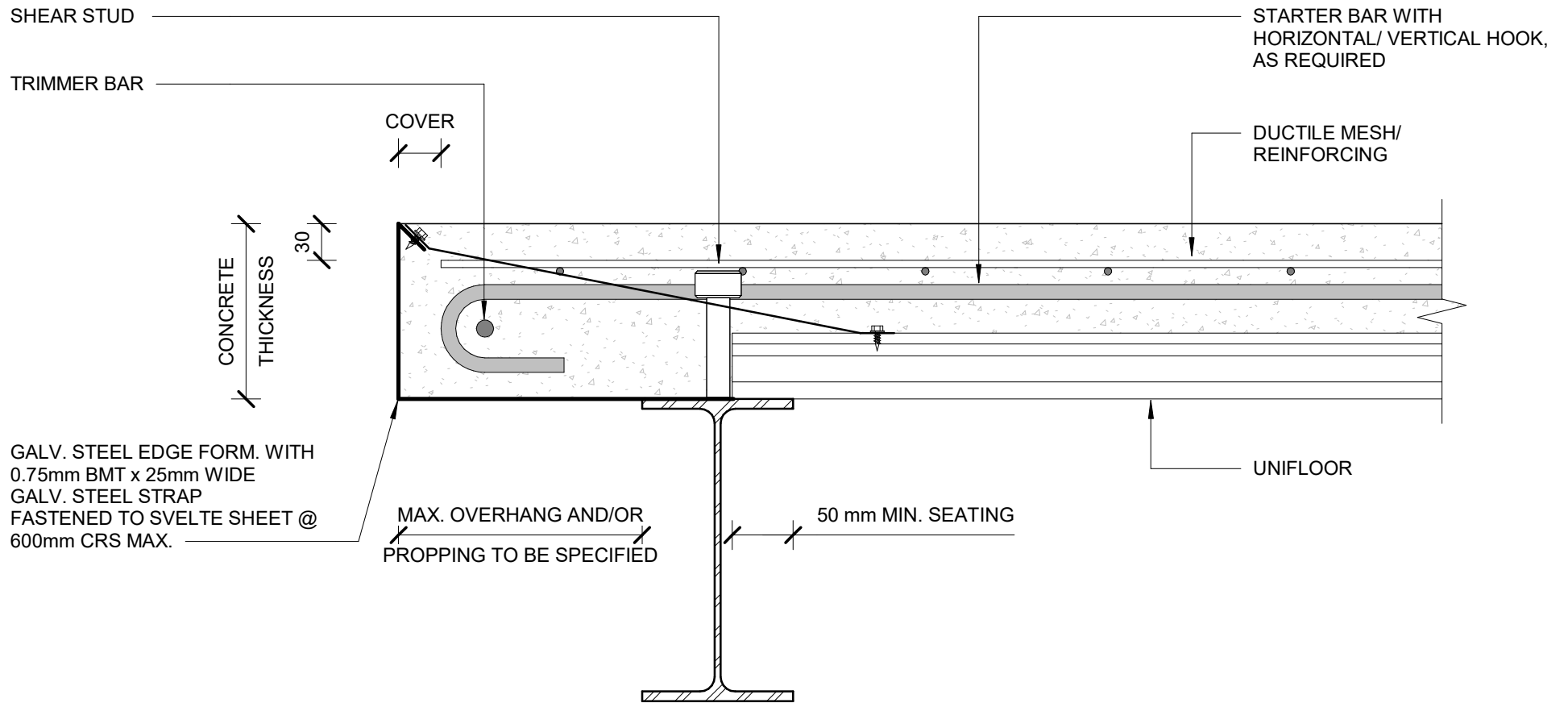


NOTE:

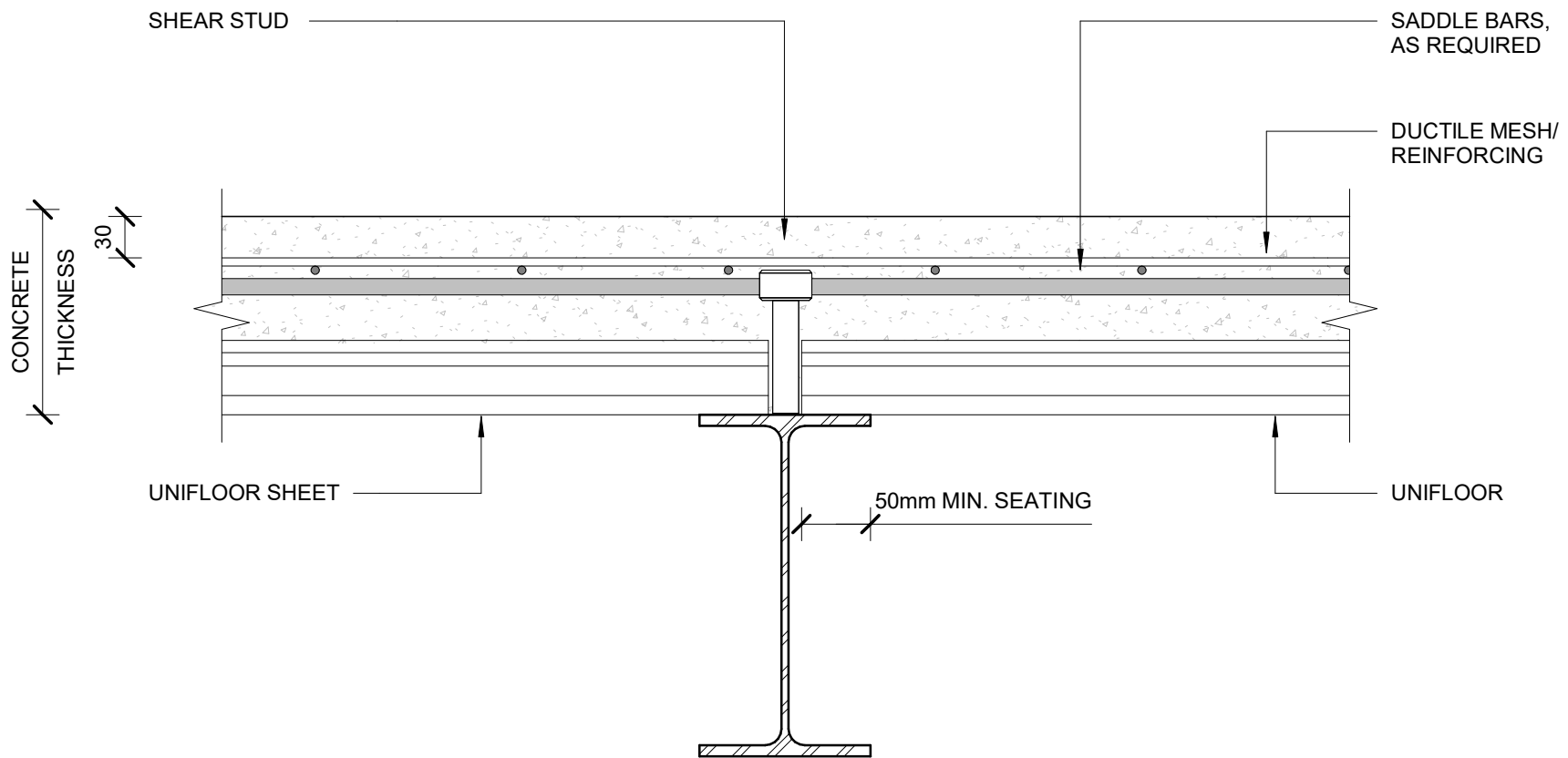
SHOULD THE SUPPORT SET OUT NOT SUIT THE SVELTE SHEET WIDTH LAYOUT A 150mm MAX. ALLOWABLE VOID MAY BE FORMED USING THE FOLLOWING METHODS:

- TIMBER FORMWORK
- SHEET METAL FLASHING FIXED TO SVELTE SHEET & STEEL USING TEK SCREWS @ 300 CRS

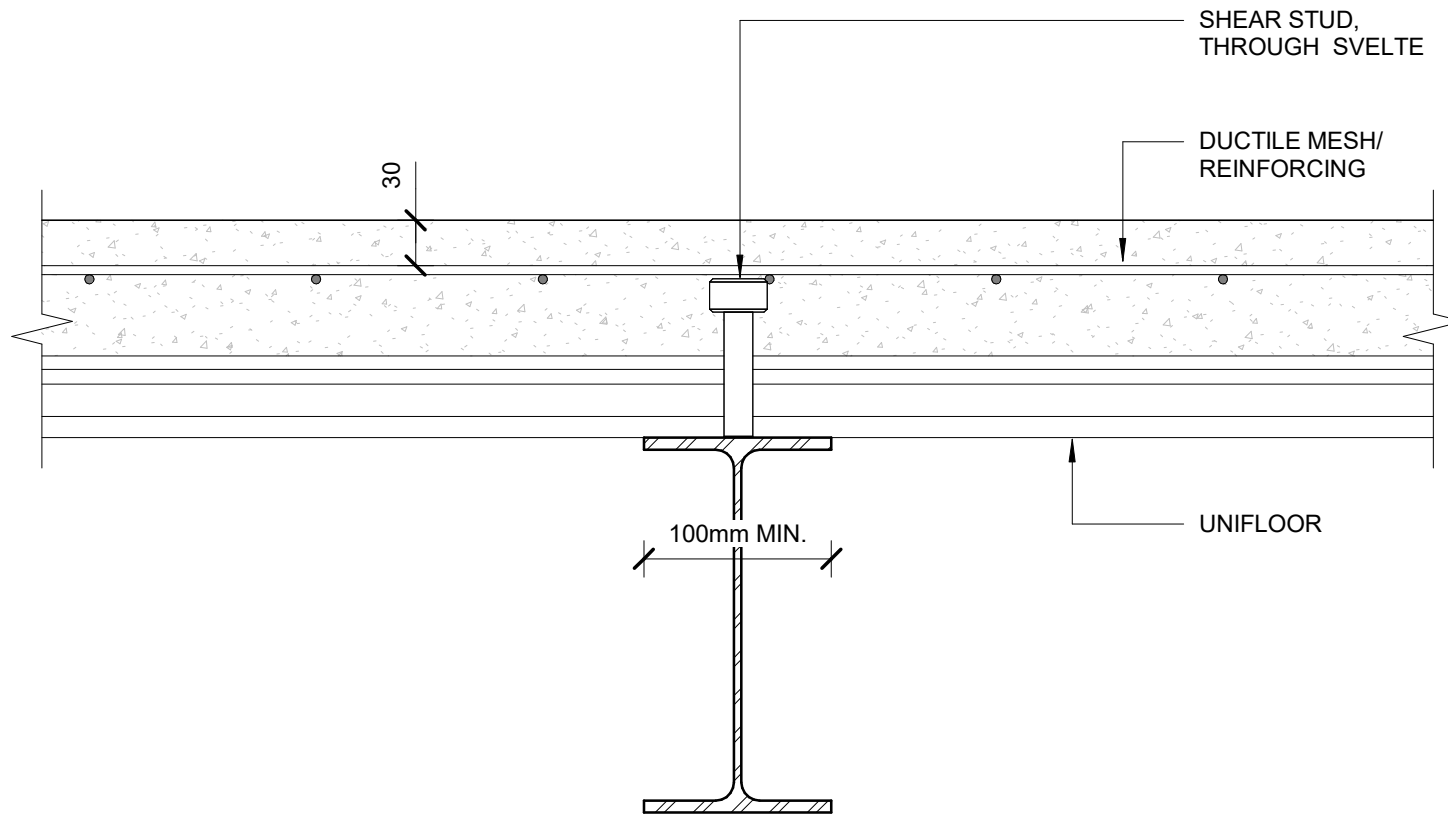
EDGE STEEL BEAM SUPPORT PARALLEL TO TRAY SPAN (OPTION 2)



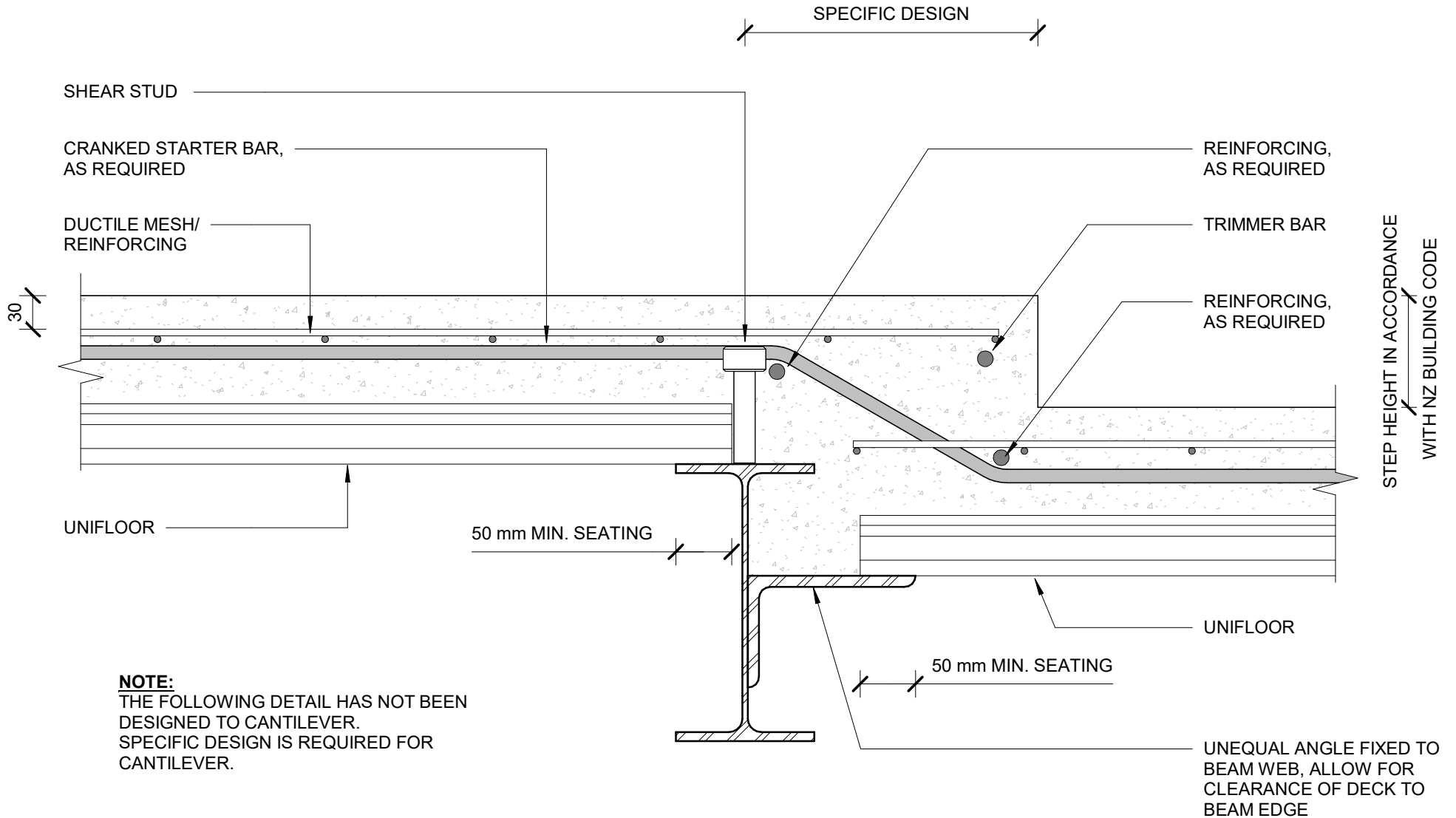
EDGE STEEL BEAM SUPPORT PERPENDICULAR TO TRAY SPAN



STEEL BEAM INTERNAL SUPPORT PERPENDICULAR TO TRAY SPAN

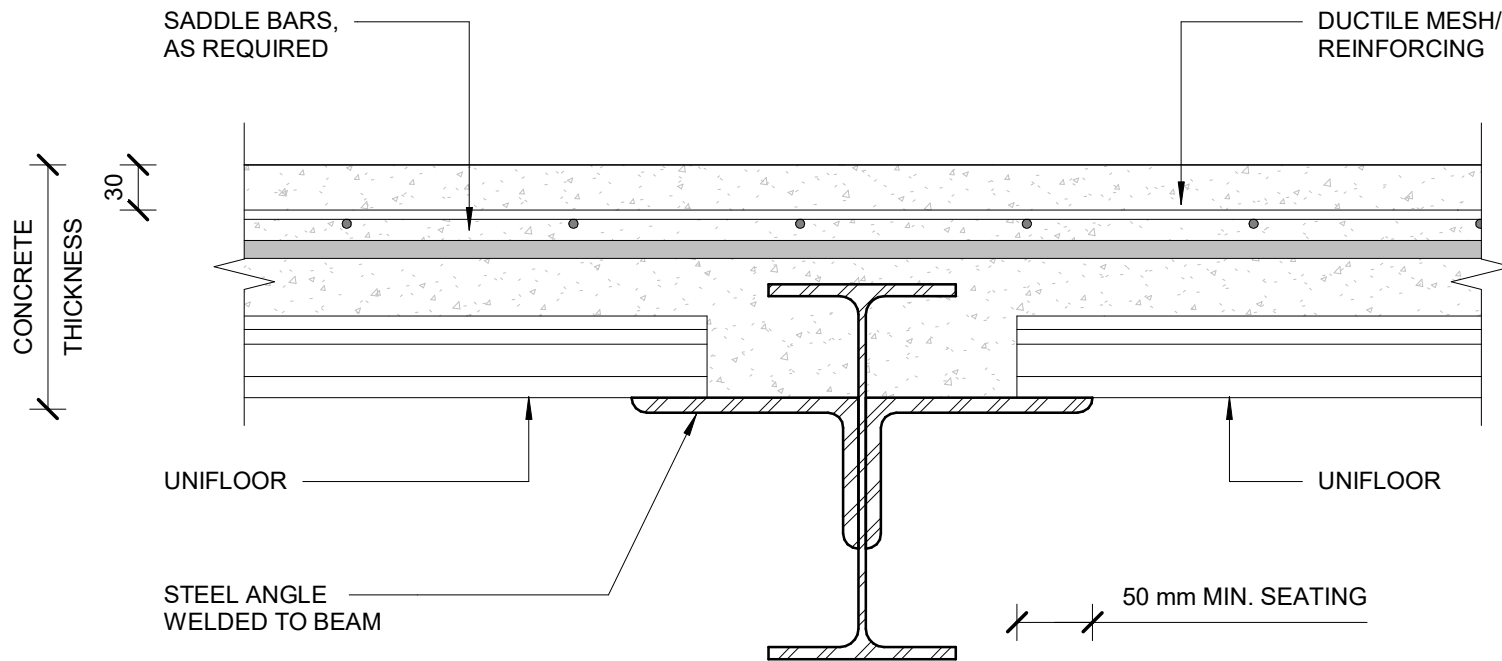


STEEL BEAM SUPPORT CONTINUOUS SPAN

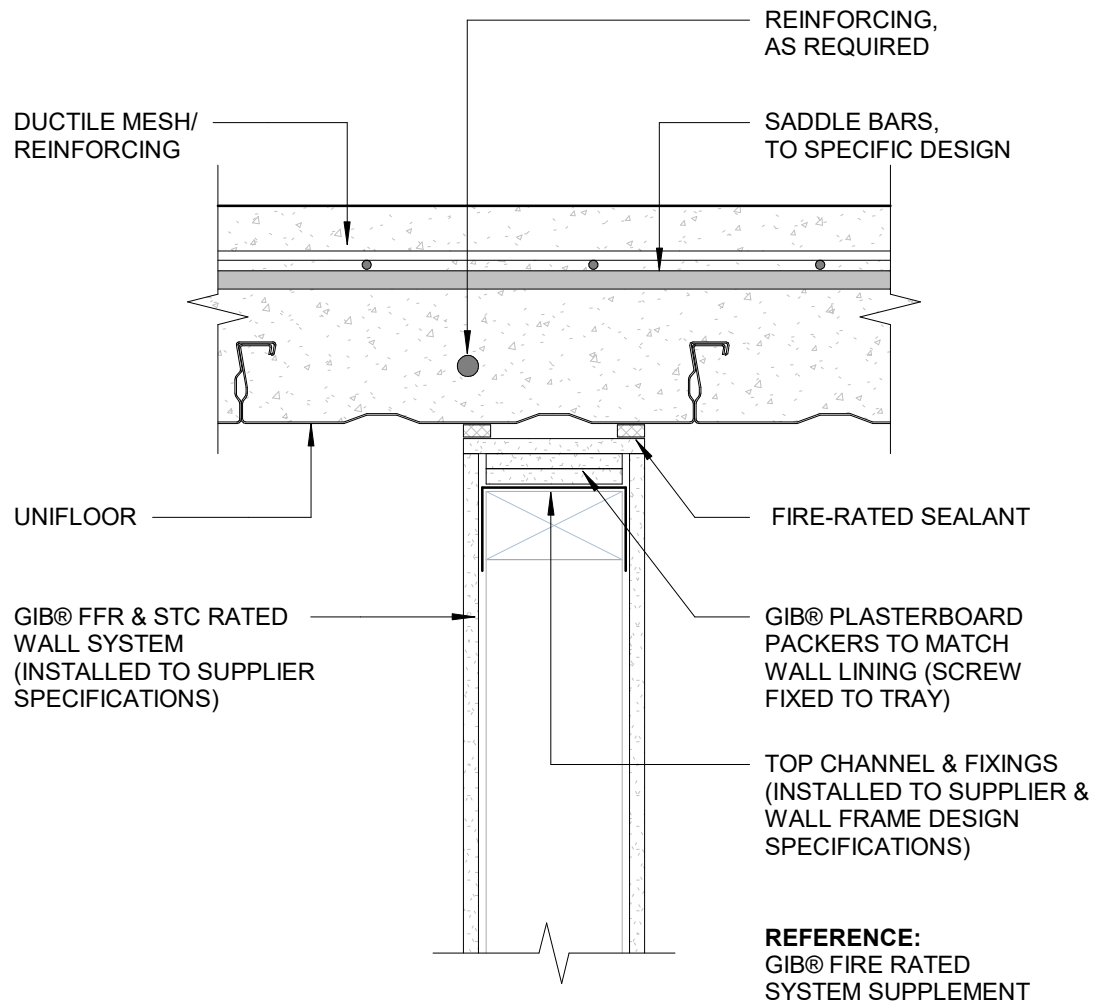


NOTE:
 THE FOLLOWING DETAIL HAS NOT BEEN
 DESIGNED TO CANTILEVER.
 SPECIFIC DESIGN IS REQUIRED FOR
 CANTILEVER.

STEP ON STEEL BEAM SUPPORT



STEEL BEAM SUPPORT INTERNAL SET DOWN



FFR & STC RATED GIB WALL SYSTEM PARALLEL TO TRAY (UNDERSIDE JOINT)

COMPOSITE STEEL FLOORING

Rev. 1.0

UNIFLOOR

Reference Designer

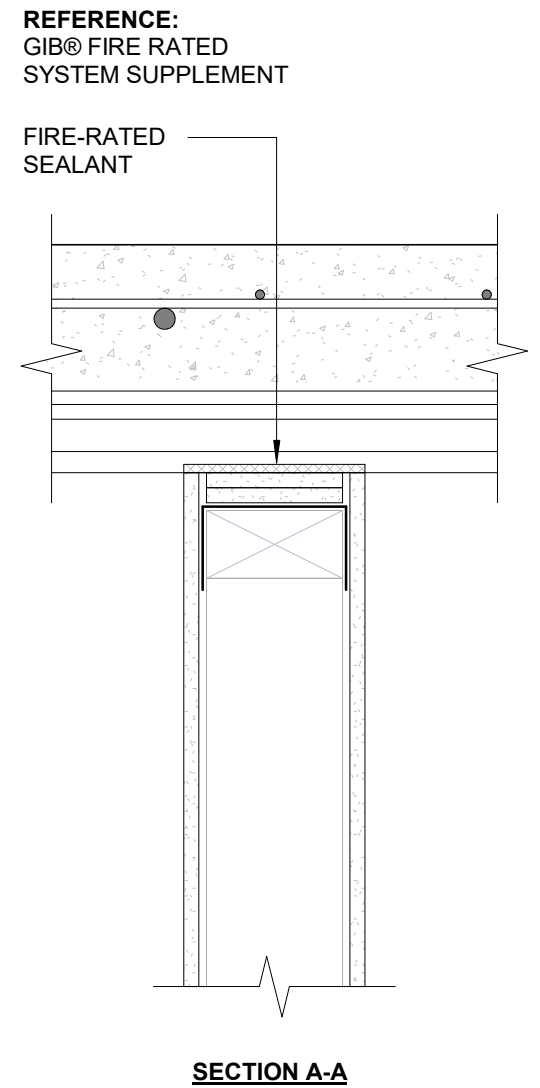
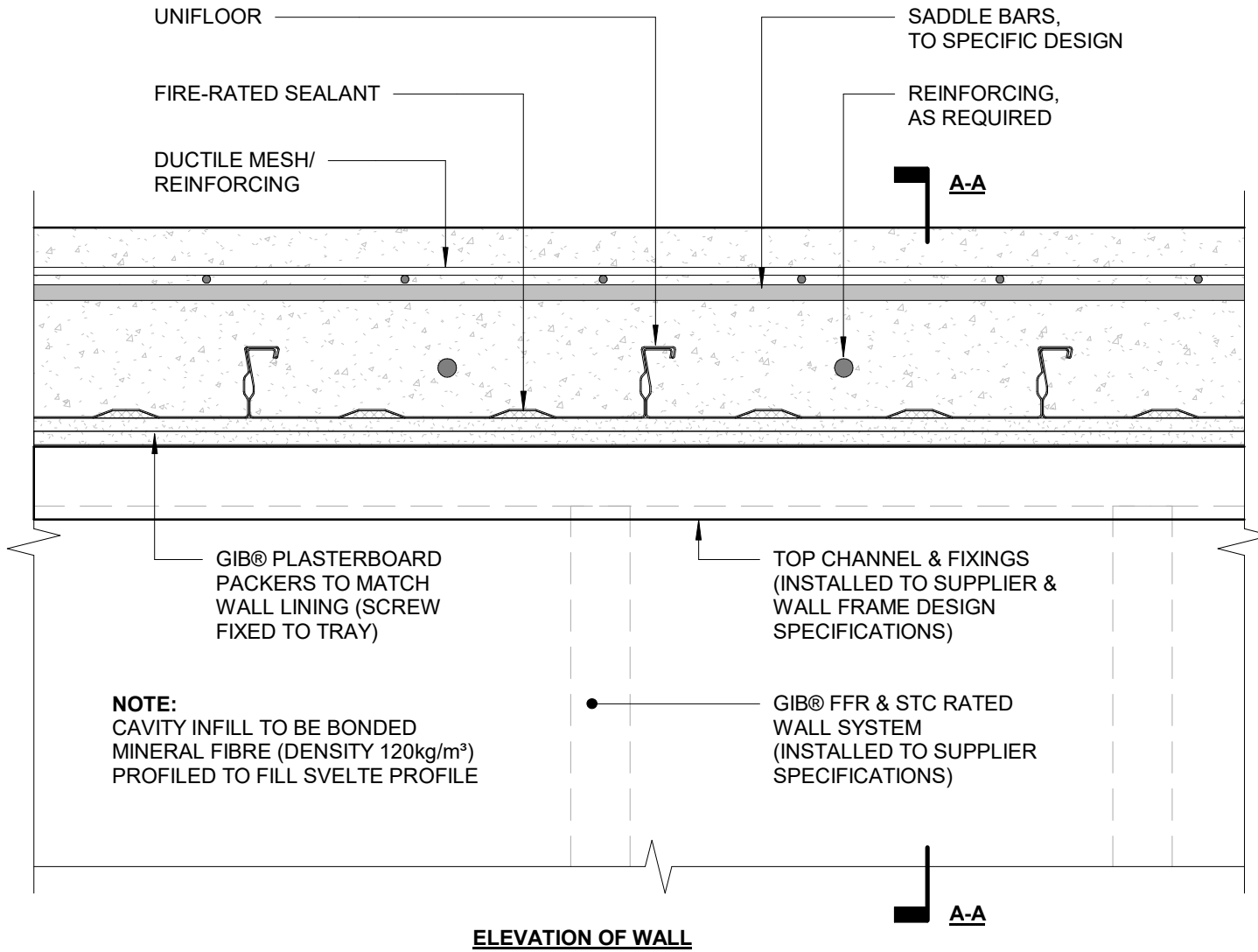
Date 20.07.2022

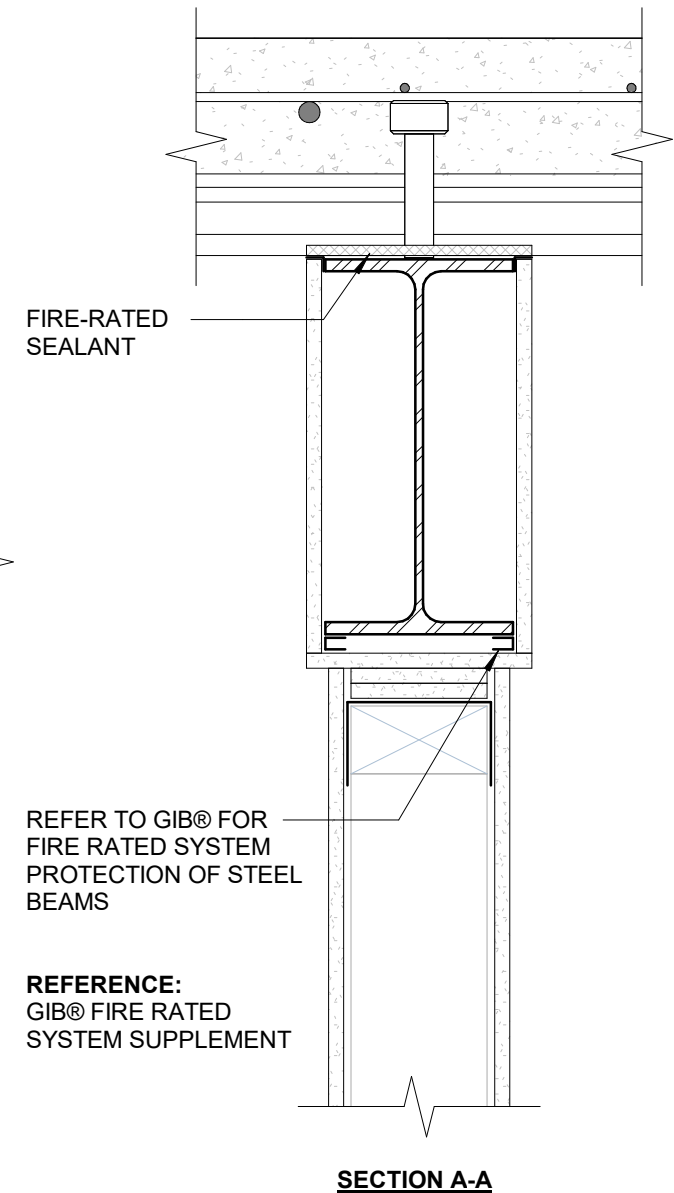
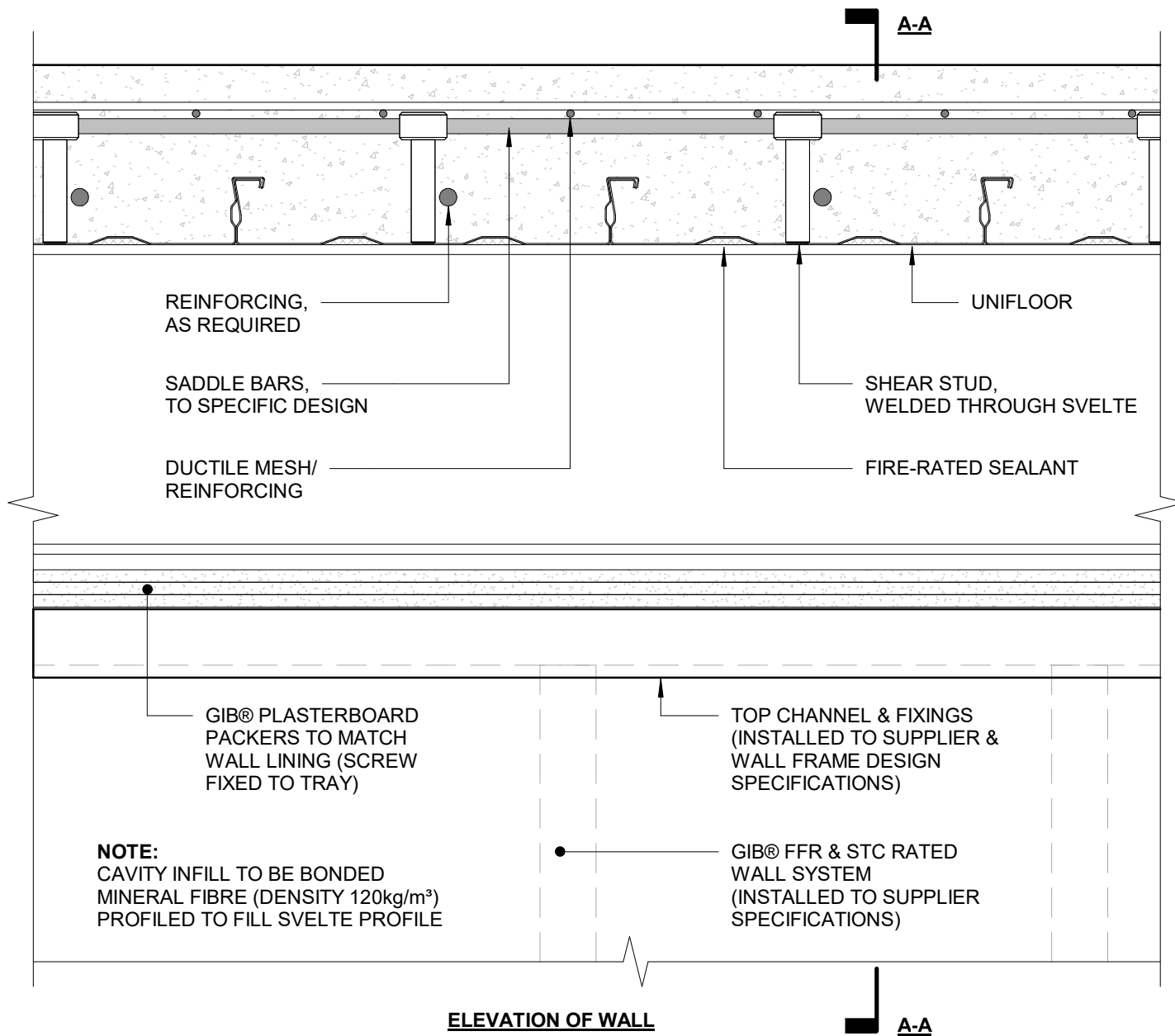
Scale 1 : 5

Sheet

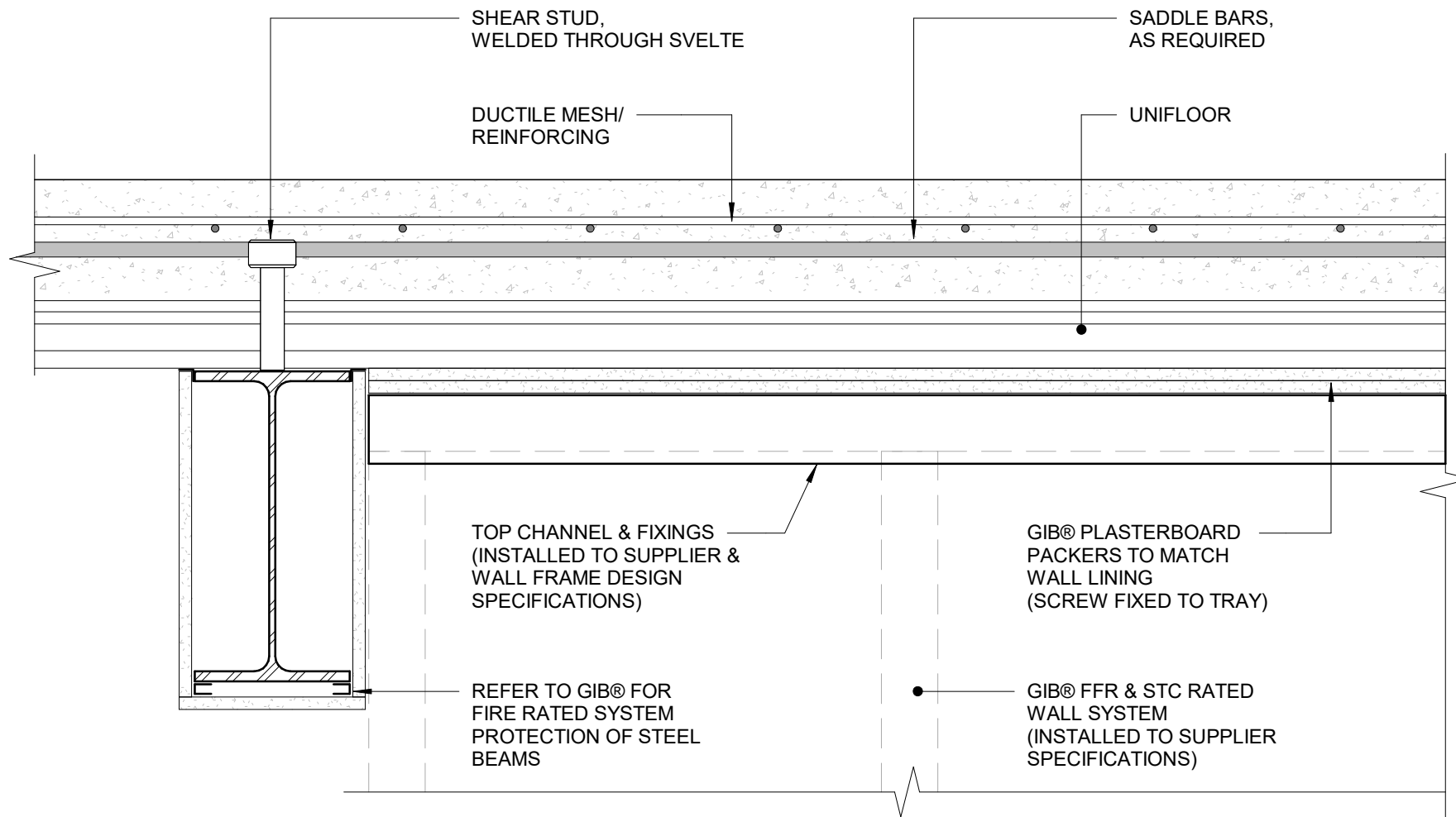
UNI/19

DISCLAIMER:
All details are to be used for indicative purposes only. The engineer should consult Metalcraft Composite Flooring- Steelspec Design Tool and the relevant AS/NZ Standards for the correct specification. Details and Compliance to NZBC regulations of the supporting mechanisms is the responsibility of the engineer.





FFR & STC RATED GIB WALL SYSTEM JOINT TO STEEL BEAM/ PERPENDICULAR TO TRAY



ELEVATION OF WALL

REFERENCE:
GIB® FIRE RATED
SYSTEM SUPPLEMENT

FFR & STC RATED GIB WALL SYSTEM JOINT TO STEEL BEAM/ PARALLEL TO TRAY